

Artesia Pump Station Additional Wells 7 & 8 Project

Ismael Rosales, P.E.

Project Engineer

Roxanne Lockhart

Contract Administrator

Marisol Robles

SMWVB Program Manager

Max Wallack, P.E.

Design Consultant



Non- Mandatory Pre-Proposal
Meeting

August 31, 2021

MAKING SAN ANTONIO
WATERFUL



WebEx Meeting Information

- Attendees for this pre-proposal meeting can:
 - Access the presentation thru the WebEx link to follow along real-time
 - Access via phone and follow along with the PowerPoint posted on the SAWWS web at:
 - https://apps.saws.org/business_center/contractsol/Drill.cfm?id=3995&View=Yes
- Use the Chat feature in WebEx to sign in for this meeting (name, company name and contact information), as well as submit questions
 - SAWWS will read questions aloud at the end of the meeting
- Please keep your devices muted during the meeting

Oral Statements

Oral statements or discussion during the pre-submittal meeting today will not be binding, nor will it change or affect the terms or conditions within the Plans and Specifications of this Project. Changes, if any, will be addressed in writing only via an Addendum.

Meeting Agenda

- General Information
- SMWVB Requirements
- Vendor Registration
- Contract Solicitations Website
- Contract Requirements
- Required Experience
- Evaluation Process
- Evaluation Criteria
- Proposal Packet Preparation
- Key Dates
- Communication Reminders
- Proposal Due Date
- Project Overview
- Contact Information

General Information

- This is a Non-Mandatory pre-proposal meeting
- This presentation has been posted on the SAWS website
 - Attendee list will be posted at the conclusion of the meeting
- The construction estimate is \$12,670,000.00 (per Addendum No 1)
- Construction services being procured through Request For Competitive Sealed Proposals (RFCSP) method under Texas Government Code 2269
- Construction duration is 910 calendar days

Aspirational SMWVB Goal

Industry	Aspirational SMWB Goal
Construction	20%

The aspirational SMWVB goal is 20% of your total Price Proposal

Minimum Qualifications for SMWB recognition:

- **South Central Texas Regional Certification Agency**
 - SBE-Certified (even MBEs and WBEs)
 - Includes the Texas Historically Underutilized Business “HUB” Program
 - Local Office or Equipment Yard
- **Local**
 - Counties: Atascosa, Bandera, Bexar, Comal, Frio, Guadalupe, Kendall, Kerr, McMullen, Medina, Uvalde and Wilson

Good Faith Effort Plan (GFEP) FAQs

- **Q: Is the 20% SMWVB goal mandatory?**
A: No, but we ask prime contractors to do their best with good faith outreach efforts. If the goal is not met, proof of outreach efforts is required with the submittal.
- **Q: What if I am having trouble finding SMWVB subcontractors?**
A: The South Central Texas Regional Certification Agency (SCTRCA) has a search portal at www.sctrca.sctrca.org.
- **Q: What if my business is SMWVB-certified? Do I need to find SMWVB subs?**
A: If your firm is SMWVB-certified, you will most likely meet the goal. However, the GFEP is a required document, and a good faith outreach effort is still necessary.
- **Q: Do I need to include all my subcontractors in the GFEP or just those that qualify towards the SMWVB goal?**
A: All subcontractors need to be included in the GFEP, even those that may not count towards the SMWVB goal.
- **Q: What if I have questions about the GFEP?**
A: Please contact the SMWVB Program Manager at 210-233-3420, or at Marisol.Robles@saws.org. GFEP questions can be asked at any time before the submittal is due.

SMWVB Scoring

Proposed SAWS Construction Alternative Delivery Method SMWB Scoring:

All respondents may earn the maximum number of SMWVB points (10 points). Firms may use any combination of points below when attempting to meet the SMWB goals. Self-performance and subcontracting may be used to achieve the aspirational goals and earn points. SMWB prime contractors and/or subcontractors must be certified by the South Central Texas Regional Certification Agency, and must have a local presence in the San Antonio Metropolitan Statistical Area in order to be eligible for SMWB points.

1. M/WBE Scoring Method: 10 Points (By percentage) 20.00% M/WBE Goal

- MBE Participation Percentage between 1% and 4.99%: 1 Point
- MBE Participation Percentage between 5% and 9.99%: 2 Points
- MBE Participation Percentage between 10% and 14.99%: 4 Points
- MBE Participation Percentage between 15% and 16.99%: 5 Points
- MBE Participation Percentage between 17% and 19.99%: 8 Points
- MBE Participation Percentage meeting or exceeding 20.00%: 10 Points

2. SBE (Non-M/WBE) Scoring Method: 5 Points (By percentage) 5% SBE Goal

- SBE Participation Percentage between 1% and 1.99%: 1 Point
- SBE Participation Percentage between 2% and 2.99%: 2 Points
- SBE Participation Percentage between 3% and 3.99%: 3 Points
- SBE Participation Percentage between 4% and 4.99%: 4 Points
- SBE Participation Percentage meeting or exceeding 5.00%: 5 Points

Post Award: Subcontractor Payment & Utilization Reporting (S.P.U.R.) System

1. Subcontractor & Supplier Payment Tracking
2. Subcontractor and Supplier Additions or Substitutions
3. LCP Tracker
4. Must be Current and Accurate before Retainage is released

<https://saws.smwbe.com>

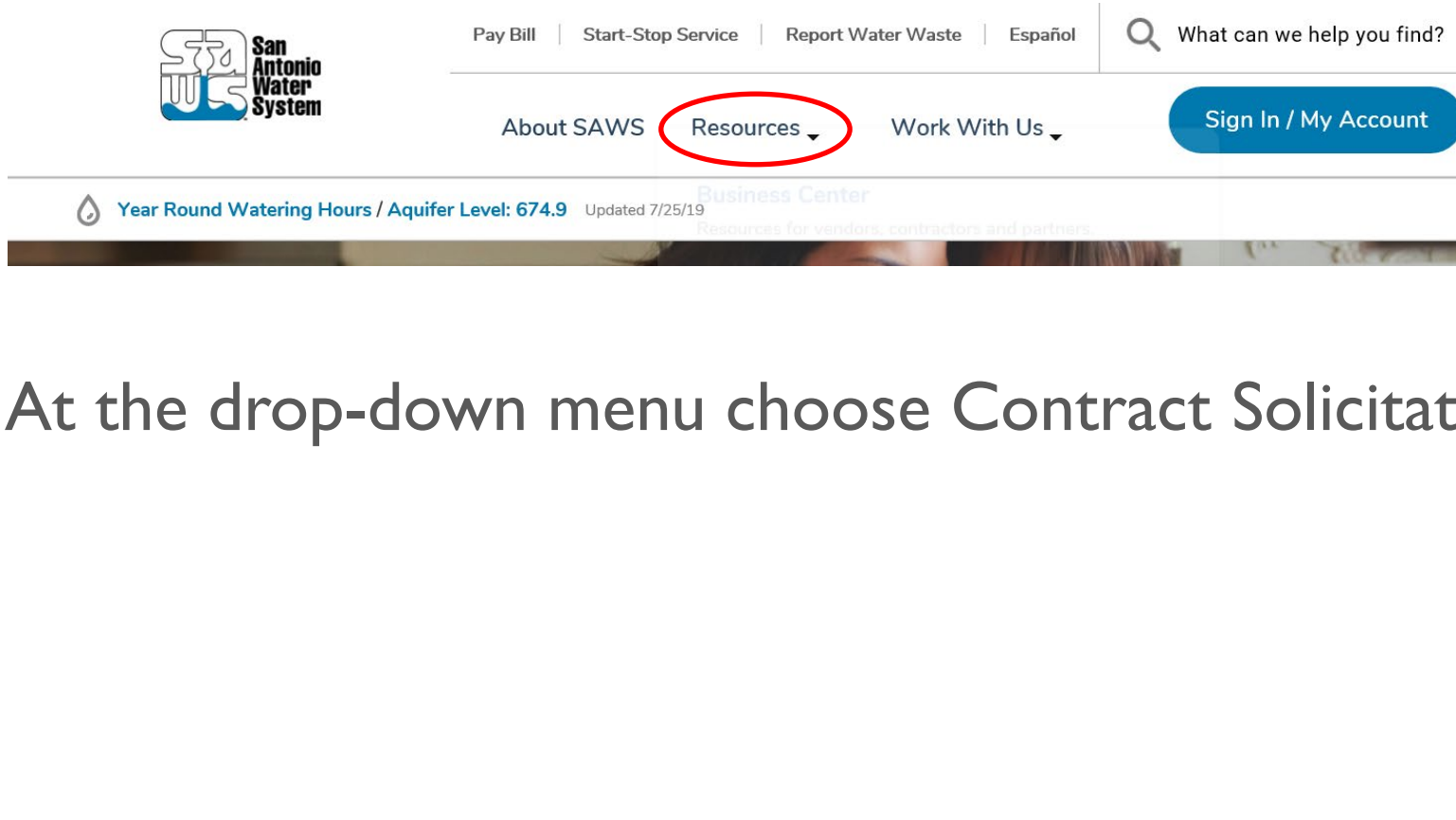


The screenshot displays the homepage of the San Antonio Water System's Subcontractor Payment & Utilization Reporting System. The page features a blue header with the San Antonio Water System logo on the left, the text "OUR MAIN SITE" in the center, and a "CONTACT SUPPORT" button on the right. The main content area has a background image of industrial water treatment equipment. The title "Subcontractor Payment & Utilization Reporting System" is prominently displayed in white text, with a "Log In" button below it. Below the title, there are three columns of links: "System Training" (with a "Training" button), "About the System" (with an "Information for Vendors" button), and "Account Access" (with "Account Lookup" and "Forgot Password" buttons). A footer at the bottom states: "The Subcontractor Payment & Utilization Reporting System is powered by B2CNow Software © Copyright 2018."

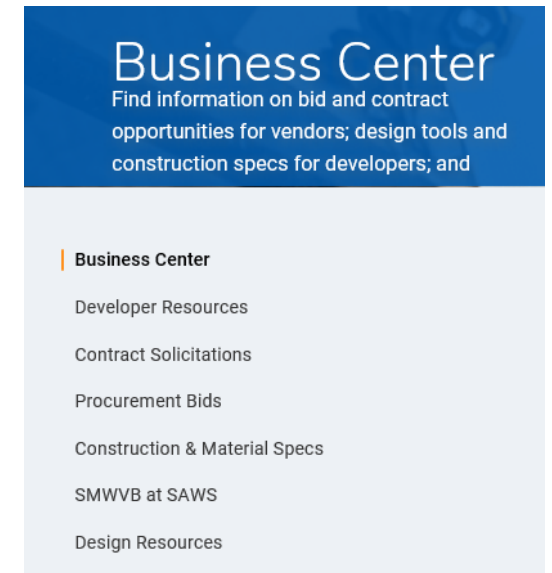
Artesia Pump Station Additional Wells 7 & 8 Project

Contract Solicitations Website – Recent Changes

- To locate the Contract Solicitations website choose Resources



- At the drop-down menu choose Contract Solicitations



Contract Solicitations Website – Recent Changes

- Choose the specific project
- The following buttons are now located under the advertisement:
 - Notify Me
 - Plan Holder's List
 - Downloads
 - Plans
 - Specs
 - Addendums
 - Geotechnical Data Report



The screenshot displays a project advertisement for a "Non-Mandatory Pre-Bid Meeting" on August 6, 2019, at 10:00 AM. The location is the San Antonio Water System Customer Service Building. Below the advertisement, there are three main sections: "Notify Me" with a "Subscribe" button, "Plan Holders List" with a "View List" button, and "Downloads" which includes links for "Specifications" and "Plans", both dated July 31, 2019, and requiring login access. A red arrow from the text on the left points to the "Notify Me" button.

Non-Mandatory Pre-Bid Meeting
10:00 AM, Tuesday Aug. 6, 2019
San Antonio Water System Customer Service Building, 2800 U.S. Hwy 281 N, San Antonio, Texas 78212; Conference Room CR-C145

Notify Me
Receive updates sent straight to your inbox.
[Subscribe](#)

Plan Holders List
View plan holders list.
[View List](#)

Downloads

Specifications
Jul. 31, 2019
Note: You must be logged in to access this document.

Plans
Jul. 31, 2019
Note: You must be logged in to access this document.

Vendor Registration & Notification (VRN)

- Please register through SAWS Vendor Registration Program on the SAWS website at www.saws.org to ensure access to the latest information
- To receive updates, including Addendums, for specific projects, registered vendors must 'Subscribe' to the project by selecting the project, and clicking 'Subscribe' under the Notify Me box

https://apps.saws.org/Business_Center/Contractsol/



Notify Me

Receive updates sent straight to your inbox.



Subscribe

Contract Requirements

Prevailing Wage Rate and Labor Standards – Section 2.10 of the General Conditions

- Certified payroll to be submitted on weekly basis
- Wage decisions are included within the specifications
- Contractors to utilize LCP Tracker
- Site visits are random and unannounced
- Interviews will be conducted and will be private & confidential
- Payroll records are subject to review
- All apprenticeship programs will need to be approved by Department of Labor prior to starting
- Contractors are responsible for sub-contractor payroll
- Late payrolls delay contractor payments from SAWWS

Contract Requirements

- Insurance requirements are found in Section 5.7 of the GCs
 - Construction w/ Pollution, Excess of \$2 Million and Installation Floater coverage in lieu of Builder's Risk coverage
- Contractor must maintain insurance coverage during the construction of this Project
- SAWS will ask for insurance prior to Board award to expedite execution of the contract
 - Any deficiencies must be corrected prior to Board award
 - Insurance must be compliant prior to executing the contract for all SAWS contracts

Contract Requirements

- Artesia Wells 7 & 8 Well Data is available to view on SAWS' website with the completion of a disclaimer form
- Liquidated Damages are \$970.00 per day

Required Experience

- Respondents should have the following experience to submit a proposal:
 - Should clearly demonstrate, completely and sufficiently, that drilling in the Edwards Aquifer (or similar) to a depth of 1,000 feet or greater, with a nominal diameter of 22 inches or greater open hole production zone, installing lineshaft vertical turbine pumps with 5,000 gpm minimum, 200 HP well motors or greater as primary business focus and service, and such services have been successfully provided for at least five (5) continuous years
 - Detailed requirements are included in the Supplementary Instructions to Respondents and Evaluation Criteria Forms

Evaluation Process

- Technical Evaluation Committee (TEC) will score the proposals based on the evaluation criteria published in the Supplementary Instructions to Respondents to determine the Respondent who can provide the best value to SAWS
- Price will be calculated (lowest price receives the highest points) and added to final scores
- SMWB points will be added to final scores
- Selection Evaluation Committee reviews final scores
- Negotiations, if any
- Board award

Evaluation Criteria

Criteria	Weight	Pg. No.
Team Qualifications and Experience	20%	SIR-3
Quality, Reputation, and Ability to Deliver Projects on Schedule and within Budget	20%	SIR-5
Project Approach including Delivery Schedule	15%	SIR-8
Price Proposal	35%	SIR-9
Small, Minority, and Woman-owned Business Participation	10%	SIR-9
TOTAL	100%	

Evaluation Criteria

Team Qualifications and Experience (20 Points)

- Organizational Structure and Information on Prime Contractor
 - No. of employees, debarment/litigation history, years performing work, financial statements, etc.
- Proposed Team Structure and Key Personnel Roles and Responsibilities
 - 1 Page Org chart with Key Personnel for Prime and Key Subcontractors
 - Clear description of proposed team, including Key Subcontractors, teaming history, and proposed approach for ensuring a successful project
 - Clear description of proposed team's Key Personnel roles and responsibilities
- Qualifications and Experience of Key Personnel Proposed for this Project
 - 1-page Resumes for Key Personnel (Prime Contractor and Key Subcontractors) identified on the Org Chart

Evaluation Criteria

Quality, Reputation & Ability to Deliver Projects on Schedule and within Budget (20 Points)

- Prime Contractor On-Time Completion on Similar Projects in Past 15 years
 - Three (3) Projects in the past fifteen (15) years of similar size, scope, and complexity
 - Key Personnel must have participated on 2 of the 3 projects, and
 - Project Manager 1 of 3 projects / Superintendent 1 of 3 / QC Manager 1 of 3
 - If SAWWS experience, include as part of the three (3) project references
- List of all current and recently completed new public wells drilled in the Edwards Aquifer (or similar) to a depth of 1,000 feet or greater, performed in the last five (5) years for all Utility Owners in the State of Texas
- List of all projects currently under construction in which Key Personnel are involved

Evaluation Criteria

Quality, Reputation & Ability to Deliver Projects on Schedule and within Budget (20 Points)

- **Key Subcontractor Performance on Similar Projects in Past 10 Years**
 - Projects demonstrating Subcontractor(s) Performance on Similar Projects in the past ten (10) years
 - Two (2) Projects that identified Key Site/Civil Subcontractor's PM and Project Superintendent participated in
 - Two (2) Projects that identified Key Electrical Subcontractor's PM and Project Superintendent participated in
 - Two (2) Projects that identified Key PCSI Subcontractor's PM and Project Superintendent participated in
 - Two (2) Projects that identified Key ASP Subcontractor's PM and Project Superintendent participated in
 - If Prime is self performing, Respondent shall provide two (2) additional projects for each of the Key Subcontractor roles being replaced
 - Key Personnel shall have participated in 1 of the 2 additional projects

Evaluation Criteria

Project Approach, Schedule and Availability (15 Points)

- Project Approach

- To include key milestones, specific critical processes and paths, construction phasing/sequencing, permits, approvals, coordination with stakeholder, etc.
- Procurement items, including the well pumps, well pump motors, large (24-inch and larger) diameter pipe and valves, MCCs, PLCs, electrical components, and other long-lead time equipment and devices
- Innovative ideas for cost savings
- Quality Management Plan (steps, safeguards, QC processes, document control, etc.)

Evaluation Criteria

Project Approach, Schedule and Availability (15 Points)

- **Project Schedule and Unforeseen Conditions**
 - Critical Path Method Schedule in Primavera or MS Project with all milestones, critical processes and critical path methods, etc. using anticipate NTP of November 15, 2021
 - Explain how Respondent will complete project on schedule with existing commitments
 - Identify long-lead time items and critical path shop drawing submittals
 - Provide details for the procurement and delivery of well pumps, well pump motors, large (24-inch and larger) diameter pipe and valves, MCCs, PLCs, electrical components, and other long-lead time equipment and devices
 - Past project experience with unforeseen conditions (resolution and/or recovery plan)
 - Approach to mitigate and manage unforeseen conditions for **this project**

Evaluation Criteria

Project Approach, Schedule and Availability (15 Points)

- Availability of Key Personnel and Equipment
 - Prime and Key Subcontractors for this Project
 - Equipment and Facilities for this Project
 - Per Org Chart, available workforce for various disciplines, number of crews, etc.
- Safety Information for Prime Contractor and Key Subcontractor(s)
 - TRIR for Prime and Key Subcontractors within last 5 years
 - EMR for Prime and Key Subcontractors within last 3 years
 - All Fatalities for Prime and Key Subcontractors
 - Use Safety Information Matrix

Evaluation Criteria

Price (35 Points)

- Lowest total price will receive all 35 points, maximum score
 - Remaining proposals will receive points based on comparison to the lowest price proposal

SMWVB (10 Points)

- Complete Good Faith Effort Plan (reference Supplementary Instructions to Respondents)

Proposal Packet Preparation

- Review Project Scope, Instructions to Respondents and Supplementary Instructions to Respondents
- Utilize the Proposal Response Checklist to ensure all items are included
 - 3 files required for electronic submittal
 - Follow file naming convention
- Utilize Provided Evaluation Criteria Forms
 - Fillable form in Word is provided on SAWS website

Artesia Pump Station Additional Wells 7 & 8

SAWS Job No. 21-8602
Solicitation No. CO-00416

Evaluation Criteria Form

The intent of this document is to provide Respondents a structure for their responses. While there are page limits for this solicitation, there are no character limitations.

Respondents should provide answers to the questions below in the order and spaces provided to ensure continuity between Respondent's submissions.

When responding to the questions below, Respondents should use the space provided in this form, unless otherwise indicated.

If all fields are not completed, the proposal may be deemed non-responsive.

1. Team Qualifications and Experience (20 Points)

a. Organizational Structure and Information of the Prime Contractor

- i. Provide current business organizational structure, type of business structure, and stability of organization.
- ii. Provide total number of employees and annual company revenues as of December 31, 2020.
- iii. Provide Debarment history for the company for the last ten (10) years.
- iv. Provide any litigation, arbitration, and claims history for the last three (3) years and any litigation, arbitration, and claims history with SAWS regardless of the year they occurred.
- v. Indicate the number of years performing contracting/construction work under current legal business name and/or previous legal business name(s).
- vi. Provide a financial statement by an independent Certified Public Accountant for the last three (3) complete years.

b. Proposed Team Structure and Key Personnel Roles and Responsibilities

Prior to responding to this section, refer to the Supplementary Instructions to Respondents for definitions and other requirements.

- i. Provide a 1-page organizational chart that describes the composition of the team for this project. The chart shall include proposed Key Personnel for the Prime Contractor and Key Subcontractor(s). The chart shall also include percent availability (as

EV-1

Proposal Packet Preparation

- Respondent's Proposals submitted for this RFCSP should clearly demonstrate, completely and sufficiently that:
 - They have the Required Experience
 - Projects performed by Respondent are similar in scope, size and complexity
 - Project Team experience and capabilities (Org chart, projects participated on, and resumes for Key Personnel and Key Subcontractors) are similar in scope, size and complexity
 - Team members are identified for all essential work as identified by SAWWS
- Thoroughly review evaluation criteria and respond with all required information to maximize points
 - Detailed, thorough responses are recommended
 - Avoid “boilerplate” responses

Proposal Packet Preparation

- Double check all mathematical calculations and verify all extensions
- Addendums are acknowledged on the Price Proposal
- Ensure Mobilization Line Item does not exceed the percentage allowed
 - Subtotal calculated for line items 1-28 only
- References and contact information must be valid
 - Confirm phone numbers and email addresses prior to submitting a proposal
 - Project references are the project owners, not consultants, or other contractors
- Ensure required documents are submitted and signed (i.e., Respondent Questionnaire, CIQ, etc.)

Key Dates

- August 31, 2021, at 1:00 PM **Non-Mandatory Pre-Proposal Meeting**
- September 8, 2021, by 2:00 PM **Questions Due**
- September 14, 2021, by 4:00 PM **Addendum Posted to SAWS Website**
- September 21, 2021, by 2:00 PM **Last chance to request FTP Site**
- September 22, 2021, by 2:00 PM **Proposals Due**
- September/October 2021 **Proposals Evaluated**
- October 2021 **Negotiations, if any**
- November 2, 2021 **SAWS Board Approval and Award**
- November 15, 2021 **NTP Issued**

Communication Reminders

- There shall not be any communication with the following during the Proposal period:
 - ✓ Design Engineer (Arcadis)
 - ✓ SAWS Manager or Project Engineer
 - ✓ Any other SAWS staff
 - ✓ City Council member or staff
 - ✓ SAWS Board of Trustees
- This includes phone calls, emails, letters, or any direct or indirect discussion of the Proposal

Proposal Due Date

- Proposals are due no later than **2:00 PM CDT September 22, 2021**
- **Electronic Proposals Only**
- Follow specific electronic proposal delivery instructions:
 - Request the FTP Site for Upload no later than September 21, 2021, at 2:00 PM
 - Follow naming convention provided in the Respondent Proposal Checklist for all 3 files
 - Late responses will not be accepted and will be not be opened
 - A WebEx proposal opening meeting will be held September 22, 2021, at 2:00 PM

Artesia Pump Station Site Location



Address:

703 AT&T Center Parkway
San Antonio, TX 78209

Project Scope

- Drill Well Nos. 7 and 8
- Perform well pump tests
- Install pumps and motors for Well Nos. 7 and 8
- Construct well discharge piping assemblies and flush lines
- Electrical, controls, system programming and integration associated with work
- Remove and replace pumps from Well Nos. 3, 4, and 5
- Install motors previously purchased by SAWS for Well Nos. 3, 4, and 5
- Permanent access roads to Well Nos. 7 and 8

Wells 3, 4, and 5

- Motors purchased and store on-site under SAWS Job No. 18-8603
 - 250 HP
 - 1,800 RPM
 - 4160 V
- 7,000 GPM at 89 ft TDH
- Well casing diameters
 - Well 3 - 22"
 - Well 4 - 29"
 - Well 5 - 26"

Existing Wells



Well No. 3



Well No. 4



Well No. 5

- Photos as of April 2021
- Aboveground piping being replaced under separate SAWS Project with concurrent construction
- Wellhead modifications to Well Nos. 3 and 4 under separate SAWS Project with concurrent construction
- Well mudding for pump replacement

Artesia Pump Station Additional Wells 7 & 8 Project

Wells 7 and 8 – Pumps and Motors

- 7,000 GPM @ 89 ft TDH
- 250 HP
- 1,200 RPM
- 4,160 V

Wellfield

Looking ~north at Well No. 5



Artesia Pump Station Additional Wells 7 & 8 Project

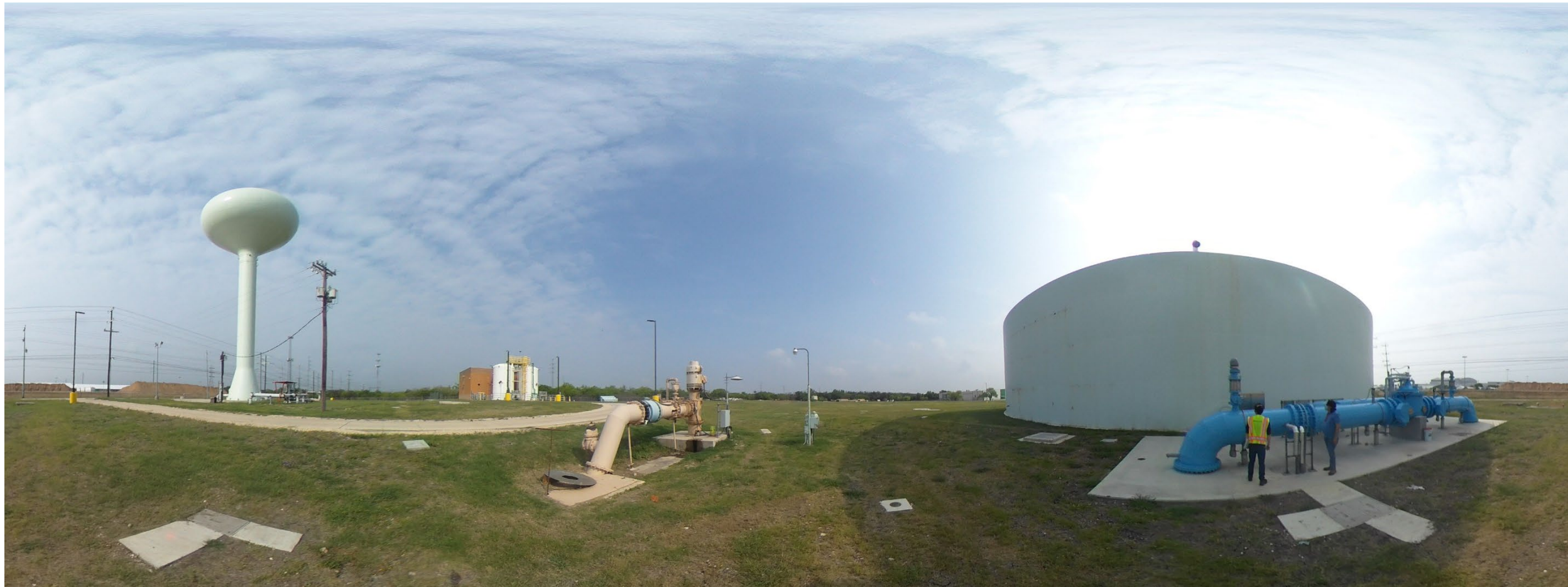
Wellfield

North is to the left



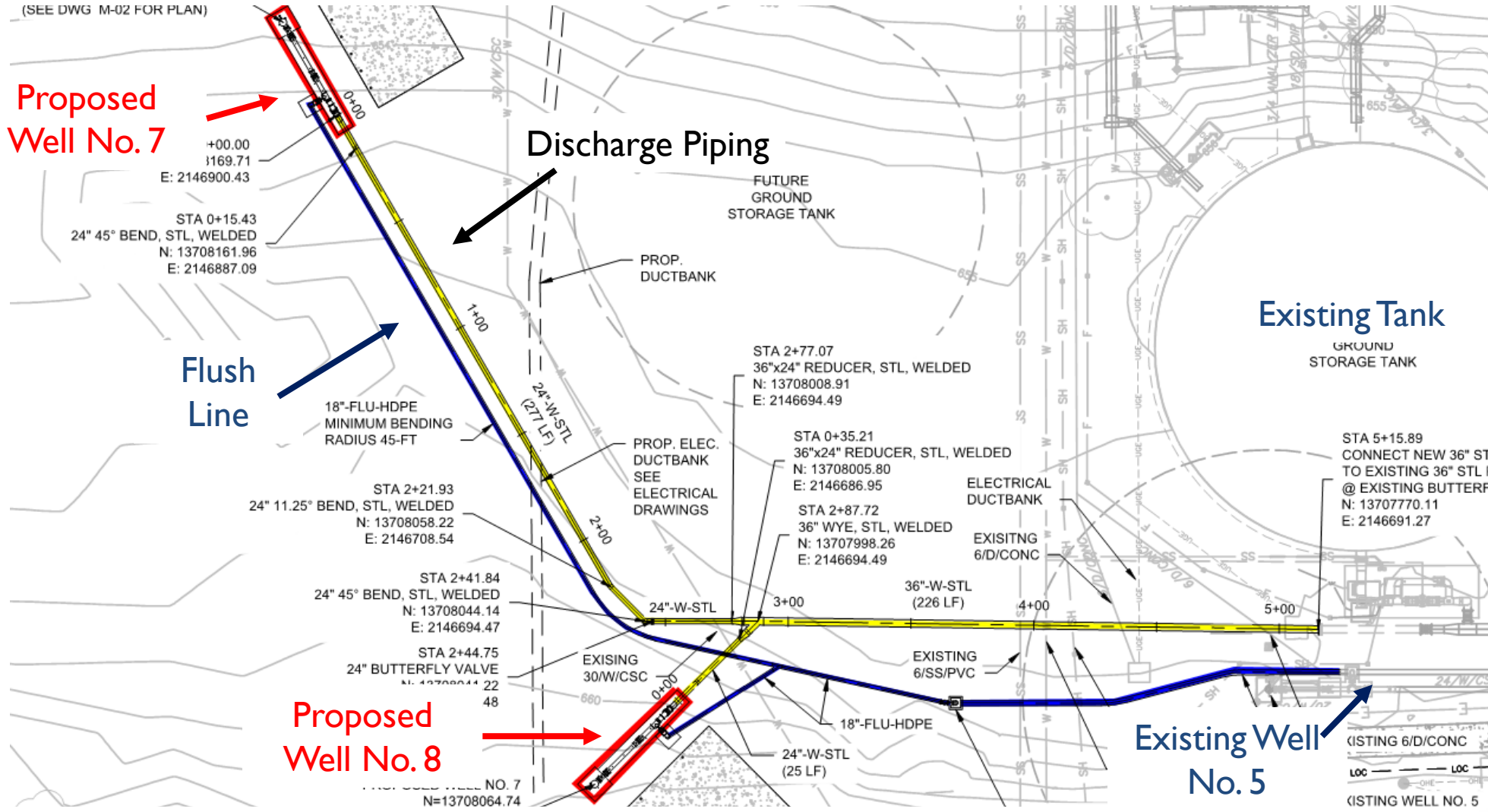
Artesia Pump Station Additional Wells 7 & 8 Project

Wellfield



Artesia Pump Station Additional Wells 7 & 8 Project

Wells 7 and 8 Piping and Flush Lines



Connection to Control Valve

Construction will be occurring in this area on the concurrent project



Wells 7 and 8 Piping Assembly

- Butterfly valves (2)
- Air release valve
- Duo check valves (main, flush)
- Magnetic flow meter
- Gate valve (flush)
- Insulating flanges
- Pre-bearing pre-lube water line assembly
- Instrumentation

Wells 7 and 8 Casing

- Wellhead per SAWS standards
- 42-inch O.D. casing surface conductor
- ASTM A606 Type 4 steel casing
- Min. 36-inch O.D. borehole to ~200 feet
- Min. 30-inch O.D. borehole to ~1,000 feet
- Min. 22-inch O.D. uncased hole in Edwards Aquifer ~ 400 feet

Contact Information

Contact Name	Title	Telephone Number	Email address
Roxanne Lockhart	Contract Administrator	210-233-3095	Roxanne.Lockhart@saws.org
Marisol V. Robles	SMWVB Program Manager	210-233-3420	Marisol.Robles@saws.org

QUESTIONS?

Reminder: Oral statements or discussion during the pre-submittal meeting today will not be binding, nor will it change or affect the terms or conditions within the Plans and Specifications of this Project. Changes, if any, will be addressed in writing only via an Addendum.

Artesia Pump Station Additional Wells 7 & 8 Project

Ismael Rosales, P.E.

Project Engineer

Roxanne Lockhart

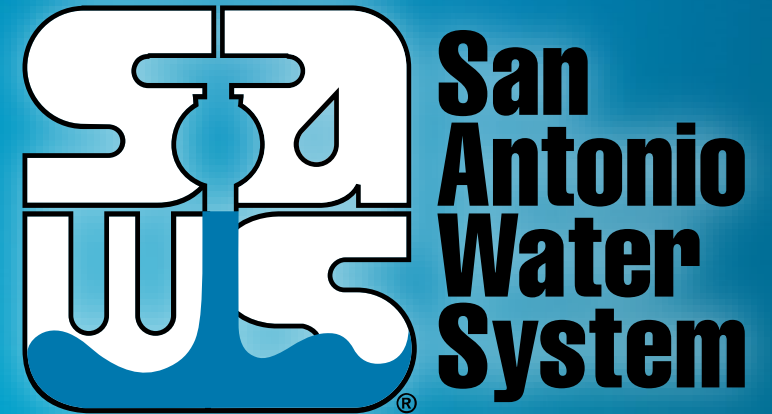
Contract Administrator

Marisol Robles

SMWVB Program Manager

Max Wallack, P.E.

Design Consultant



Non- Mandatory Pre-Proposal
Meeting

August 31, 2021

MAKING SAN ANTONIO
WATERFUL 